



# Entering Presenter Mode with Apple TV

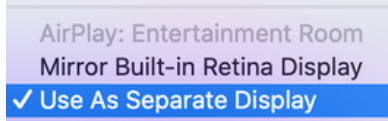
## 1. Connect to the Apple TV in the Room

## 2. Choose to Extend your Desktop on your Computer

This will appear on most Touchbars when you connect to an Apple TV

You can also access this feature by doing the following steps:

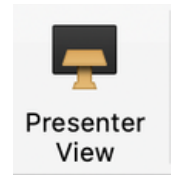
- Select the Airplay Logo in the top right-hand corner of your computer 
- Select "Use as a Separate Display"



## PowerPoint

### Open Powerpoint and Select "Presenter View"

Presenter View is found under the "Slide Show" Column




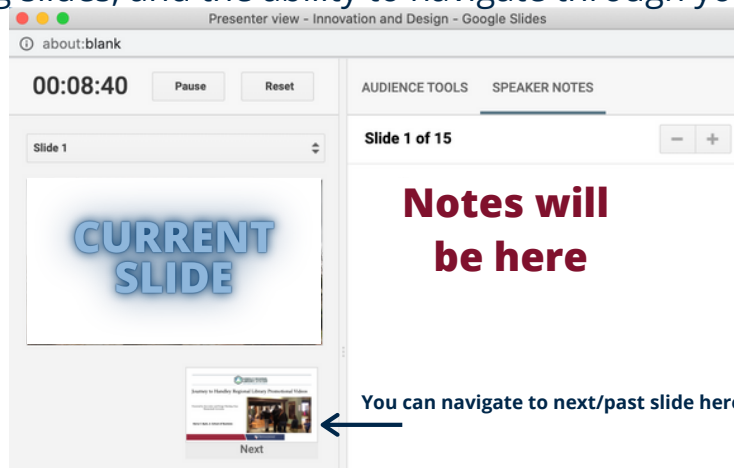
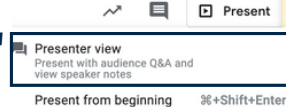
If your notes appear on the Apple TV, move your mouse to the far side of your desktop until you see it appear on the TV and select "Swap Displays"

## Google Slides

### Open the Presentation and Select "Presenter View"

Presenter View is found under the "Present" option in the top-left

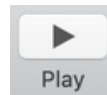
- Drag your open presentation to the right until it appears on the Apple TV and select "Full Screen" 
- A control panel will appear on your computer that will contain notes, upcoming slides, and the ability to navigate through your presentation



You can navigate to next/past slide here

## Keynote

### Open Keynote and Select "Play"



With extended desktop, Keynote will automatically display in Presenter Mode

If your notes appear on the Apple TV, move your mouse to the far side of your desktop until you see it appear on the TV and select "Swap Displays"

