



Master of Public Health (MPH)

An online, full-time, two-year professional degree program – part-time also available (45 credit hours)

PROGRAM DESCRIPTION

Shenandoah University's Division of Public Health (SUPH) offers an innovative online graduate program leading to a Master of Public Health (MPH) degree. The MPH program prepares students to assume a wide-range of public health positions that address today's most challenging population health issues. The curriculum blends the strengths and experiences of the health professions programs at Shenandoah University, as well as the community health agencies of Virginia and the surrounding areas. This program also provides students with training in public health issues present in populations living and working in rural and underserved areas.

PROGRAM PREREQUISITES

- A bachelor's degree from a regionally accredited institution

ADMISSIONS REQUIREMENTS

- Graduate application and \$30 application fee.
- Unofficial transcripts from all institutions of higher education previously attended.
- Two letters of recommendation (up to four may be submitted).
 - One from a current supervisor or academic advisor
 - One from a professor, mentor, or person familiar with the applicant's academic and/or professional ability.
 - A faculty letter of recommendation is strongly encouraged.**Dual degree only: one letter from current SU faculty.**
- Resume/C.V.
- Personal statement (1500-word maximum) that describes the applicant's education, experience, and career objectives.
- Academic writing sample (excerpt, 2-10 pages) with citations.
 - This includes research papers, presentations, or any writing assignment that required references and used peer-reviewed literature. If the applicant does not have this type of sample to submit, please contact SUGradAdmissions@su.edu for suitable substitutions.
- Language proficiency must be met. Submission of TOEFL, IELTS, PTE, or Duolingo English Test may be required. See our policy for full details: <https://www.su.edu/admissions/international-students>

FREQUENTLY ASKED QUESTIONS

- **How can I make my application more competitive?**
The Admissions Committee holistically reviews all applications and also considers the following factors to determine a candidate's potential for success in the MPH program:
 - Long range goals and commitment to public health
 - Successful leadership experience or potential
 - Documented experience and/or commitment to underserved areas and rural populations

ADMISSION & APPLICATION

Start Term

Fall (August) and Spring (January)
Summer (May) for Dual Degree Only

Admission Deadline

Fall: August 1
Spring: December

Minimum GPA: 3.0 cumulative
Completed applications reviewed regularly

Format/Location

Online

How to Apply

Begin the online application process by going to <http://www.su.edu/phapp>

Foreign Transcripts

International transcript evaluation by an accredited agency is an admission requirement. Approved services are listed at www.naces.org and <http://aice-eval.org/>.

Transfer Credit

Up to 6 graduate credits may be transferred when earned at an accredited institution. All transfer credits (earned grade of B or higher) must fill curricular requirements or electives.

Contact Us

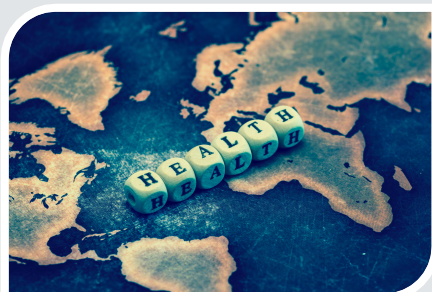
Dr. Michelle Gamber
Director of Graduate Public Health Programs
mgamber@su.edu

Office of Graduate Admissions
<mailto:SUGradAdmissions@su.edu>
call: 540-665-4581 | text: 540-401-5709

Office of Financial Aid
<https://www.su.edu/financial-aid/incoming-graduate-aid/>
<mailto:finaid@su.edu> | call: 540-665-4538



Dr. Michelle Gamber
Director of Graduate Public Health Programs



DEGREE REQUIREMENTS

Course	Title	Credits
PH 501	History and Philosophy of Public Health	3
PH 505	Social & Behavioral Aspects of Public Health	3
PH 510	Biostatistics in Public Health	3
PH 515	Principles of Epidemiology	3
PH 520	Health Policy & Management	3
PH 527	Program Planning and Evaluation	3
PH 535	Health Communication	3
PH 540	Rural Health Systems	3
PH 545	Public Health Perspectives on Chronic Disease	3
PH 550	Public Health Leadership/Professionalism	3
PH 555	Environmental Health	3
Applied Practice & Integrated Learning Experience (6 credits total)		
PH 700	Applied Practice Experience	3
PH 701	Integrated Learning Experience	2
PH 703	Introduction to ePortfolios	0.5
PH 704	Application of ePortfolios	0.5
Two Elective Courses from the following (6 credits total)*		
PH 605	Maternal and Child Health	3
PH 610	Environmental & Occupational Health	3
PH 615	Public Health Law & Ethics	3
PH 620	Community Health Research & Assessment	3
PH 625	Global Health	3
TOTAL		45

*Students are allowed to take graduate-level electives outside of public health with advisor approval and additional elective courses may be offered depending on student interest.

PUBLIC HEALTH CURRICULUM

Shenandoah University's MPH program is delivered entirely online. Students will attend classes in an online environment that will be engaging and interactive. This learning model requires students to be highly motivated, active, independent, and self-directed learners. Students are expected to think critically and act professionally in the application of course material to real-world health problems.

This program will provide students with an opportunity to analyze current health problems from a variety of interdisciplinary and interprofessional viewpoints. The program provides coursework opportunities for students to obtain broad knowledge and basic skills in public health. Students will also be exposed to rural and underserved populations through advanced coursework and will gain experience in applying their skills and knowledge to health problems in rural or urban settings during practicum training.

CAREER OUTLOOK

An MPH is a widely recognized and valued professional degree for those interested in entering the field of public health or pursuing continued work in the health professions. It is an exciting time to enter the field, and the employment opportunities are wide-ranging.

The current employment outlook for public health professionals is strong and growing annually. The demand for public health professionals continues to rise in response to increasing domestic and international health concerns such as: growing problems with chronic diseases, potential pandemics, air and water quality issues, workplace safety, and more. As these concerns continue to impact the health of our population, the need for a trained public health force to respond to these issues persists.